

How-To-Guide

Using BAPI function module in ABAP reporting

Bonus Material for 201 ABAP Interview questions

Table Of Contents

Business Object Repository	2
BOR Definition.....	2
Selecting The BAPI	3
ABAP Report using BAPI	5
Testing the Report:.....	7

By : P. Renjith Kumar

Material Code : HTG1

Business Object Repository

BOR Definition

All SAP Business Object types and SAP Interface Types and their methods are defined and described in the R/3 Business Object Repository (BOR). The Business Object Repository was introduced in R/3 Release 3.0, at the same as time as SAP Business Objects and SAP Business Workflow. Presently, the BOR is mainly used by SAP Business Workflow.

The BOR has two essential functions:

- It defines and describes SAP Business Objects and SAP Interface Types and their BAPIs.
- It creates instances of SAP Business Objects

BAPI programming

BAPIs are defined in the Business Object Repository (BOR) as methods of SAP Business Objects or SAP Interface Types and are implemented as function modules. The separation of a BAPI definition from its actual implementation enables you to access a BAPI in two ways:

- You can call the BAPI in the BOR through object-oriented method calls
- You can make RFC calls to the function module on which the BAPI is based

Some Standard BAPI'S

GetList

Delivers a list of key fields objects that satisfies certain selection Criteria

GetDetail

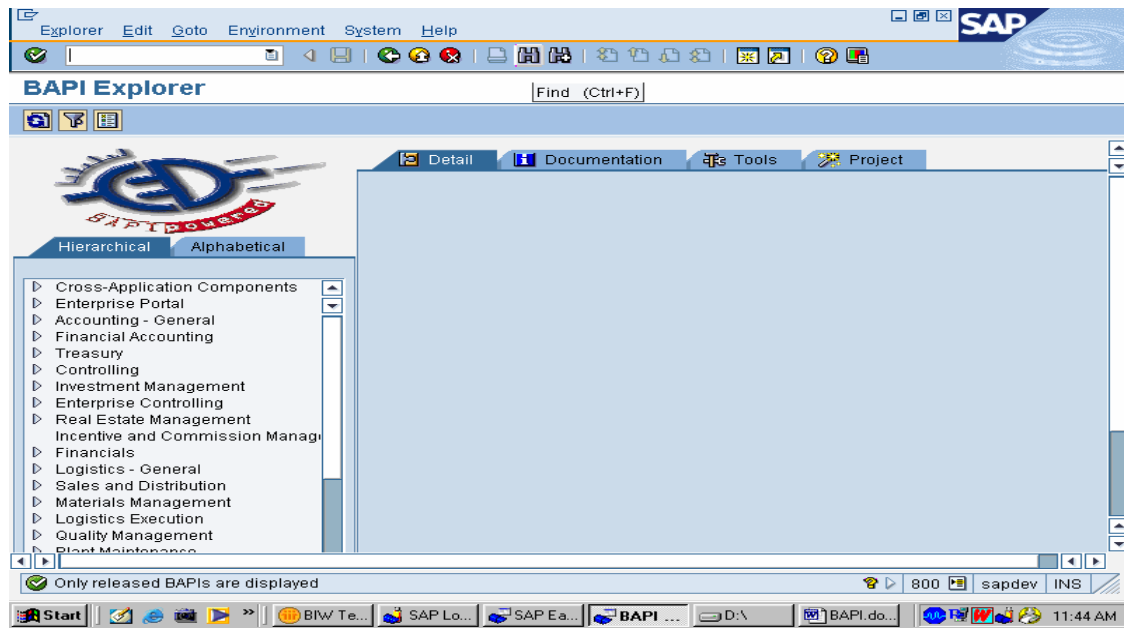
Delivers detailed information of an object, whose complete key has been Specified

CreateFromData

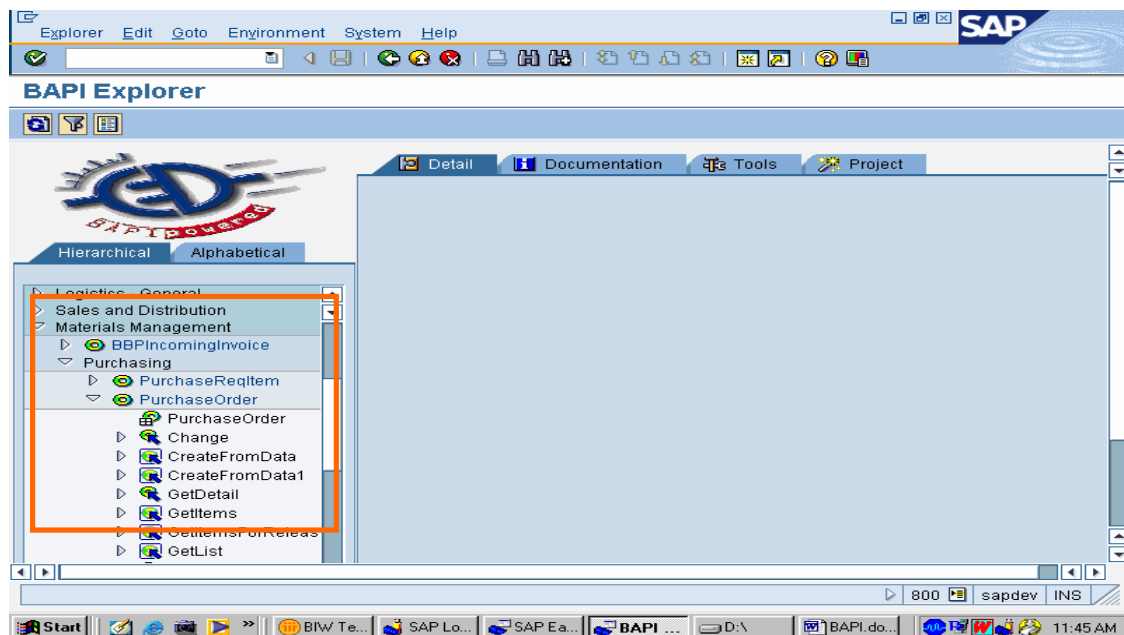
Generates new objects in R3 from key fields and returns information.

Selecting The BAPI

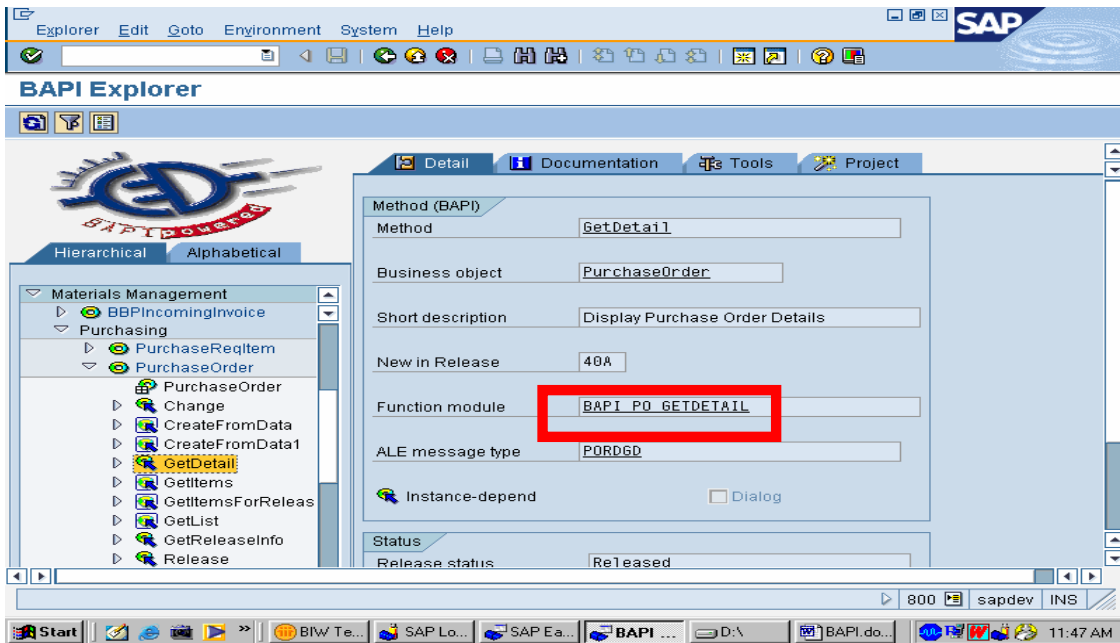
1. Give Transaction BAPI, You will get the Following Screen



Now based on you requirement you have to search for BAPI, Here we are going to search for BAPI related to Purchase Order. Purchase order is in MM so we select that from the list.

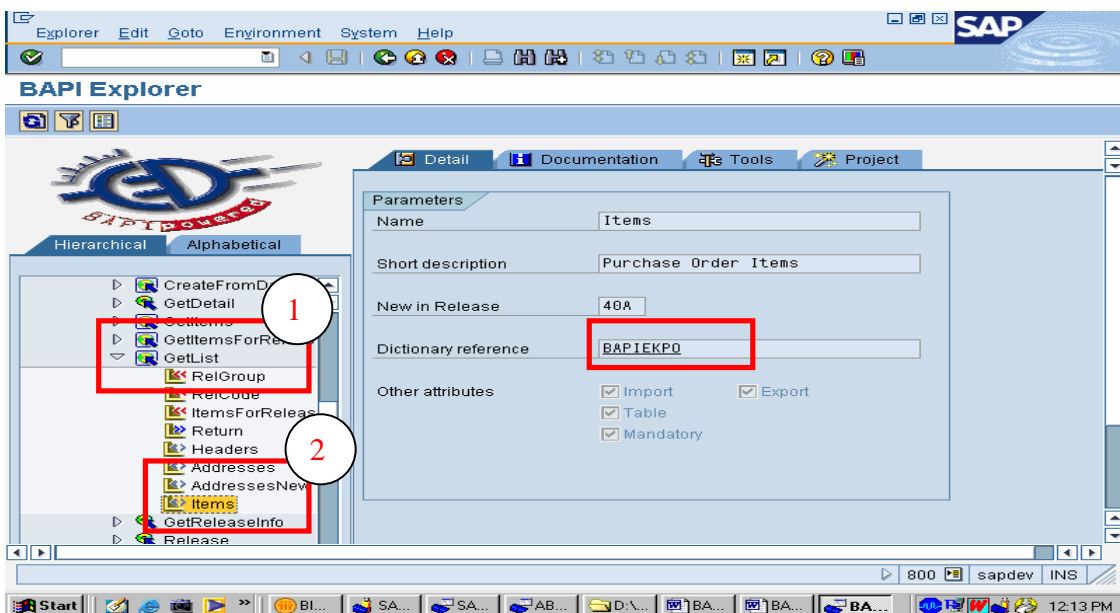


We have to get purchase order detail, So Double click on the 'GetDetail'. The right frame will show the BAPI name.



Now Expand The GetList by pressing > , you will get the screen as below

We need Purchase Order Header detail, so double Click Header; you will get Right Frame with the Dictionary Reference. The Dictionary Reference is BAPIEKKO; Note that you have to use that in Report. Double click that BAPIEKKO to see the fields that can be displayed in Report.



Structure: BAPIEKPO Active
Short Text: Transfer Structure: Display/List PO Item

Attributes Components Entry help/check Currency/quantity fields

Predefined Type 1 / 186

Component	RT...	Component type	Data Type	Length	Deci...	Short Text
PO_NUMBER	<input type="checkbox"/>	EBELN	CHAR	18	0	Purchasing Document Number
PO_ITEM	<input type="checkbox"/>	EBELP	NUMC	5	0	Item Number of Purchasing Document
DELETE_IND	<input type="checkbox"/>	ELQEK	CHAR	1	0	Deletion indicator in purchasing document
STATUS	<input type="checkbox"/>	ASTAT	CHAR	1	0	RFQ status
CHANGED_ON	<input type="checkbox"/>	PAEDI	DATS	8	0	Purchasing document item change date
SHORT TEXT	<input type="checkbox"/>	TXZ01	CHAR	40	0	Short text
MATERIAL	<input type="checkbox"/>	MATNR	CHAR	18	0	Material Number
PUR_MAT	<input type="checkbox"/>	EMATNR	CHAR	18	0	Material number
CO_CODE	<input type="checkbox"/>	BUKRS	CHAR	4	0	Company Code
PLANT	<input type="checkbox"/>	EWERK	CHAR	4	0	Plant

800 sapdev INS

Note Down the Fields name from the Components Column that you need in the Report output.

ABAP Report using BAPI

Now in The ABAP editor (SE38) create a new report and write the Code

```
*&-----*
*& Report  ZBAPI_1
*&
*&-----*
*&
*&          BAPI TO GET PO ITEM DETAILS
*&-----*

REPORT  ZBAPI_1.

DATA : BEGIN OF I_POITEM OCCURS 0.
        INCLUDE STRUCTURE BAPIEKPO.  "Include the Structure of dictionary Ref.
DATA : END OF I_POITEM.

PARAMETERS P_EBELN LIKE EKKO-EBELN default '4500012164'.. " Input .
```

Bonus material for 201 ABAP interview book

```
CALL FUNCTION 'BAPI_PO_GETDETAIL'
  EXPORTING
    PURCHASEORDER      = P_EBELN
  *   ITEMS              = 'X'
  *   ACCOUNT_ASSIGNMENT = ' '
  *   SCHEDULES         = ' '
  *   HISTORY           = ' '
  *   ITEM_TEXTS        = ' '
  *   HEADER_TEXTS      = ' '
  *   SERVICES          = ' '
  *   CONFIRMATIONS     = ' '
  *   SERVICE_TEXTS     = ' '
  *   EXTENSIONS        = ' '
  * IMPORTING
  *   PO_HEADER         =
  *   PO_ADDRESS        =
  TABLES
  *   PO_HEADER_TEXTS  =
  *   PO_ITEMS          = I_POITEM. " Assign the Internal Table
  *   PO_ITEM_ACCOUNT_ASSIGNMENT =
  *   PO_ITEM_SCHEDULES =
  *   PO_ITEM_CONFIRMATIONS =
  *   PO_ITEM_TEXTS    = .
  *   PO_ITEM_HISTORY  =
  *   PO_ITEM_HISTORY_TOTALS =
  *   PO_ITEM_LIMITS   =
  *   PO_ITEM_CONTRACT_LIMITS =
  *   PO_ITEM_SERVICES =
  *   PO_ITEM_SRV_ACCASS_VALUES =
  *   RETURN           =
  *   PO_SERVICES_TEXTS =
  *   EXTENSIONOUT     =
```

```
LOOP AT I_POITEM.
```

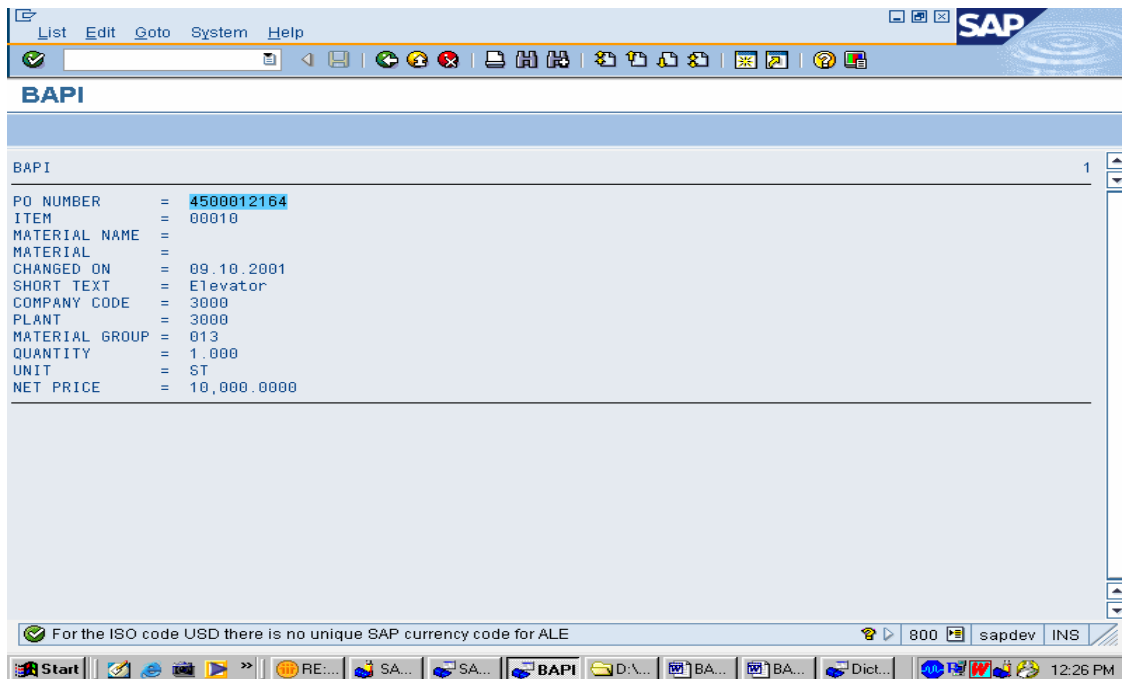
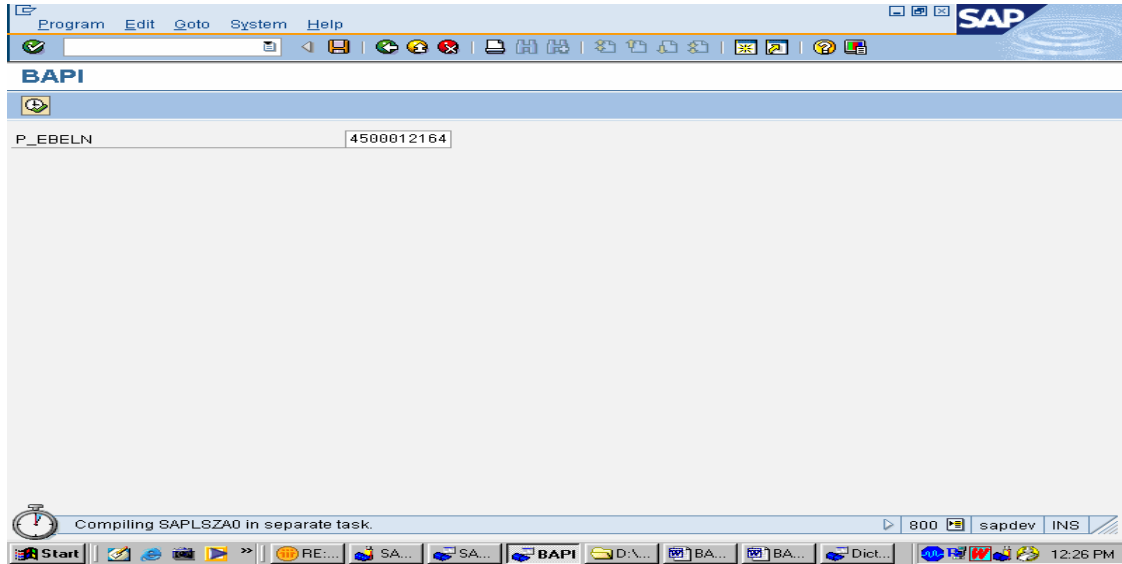
```
WRITE :/ 'PO NUMBER      = ' , I_POITEM-PO_NUMBER COLOR COL_HEADING,
      / 'ITEM            = ' , I_POITEM-PO_ITEM,
      / 'MATERIAL NAME  = ' , I_POITEM-MATERIAL,
      / 'MATERIAL       = ' , I_POITEM-PUR_MAT,
      / 'CHANGED ON    = ' , I_POITEM-CHANGED_ON,
      / 'SHORT TEXT    = ' , I_POITEM-SHORT_TEXT,
      / 'COMPANY CODE  = ' , I_POITEM-CO_CODE,
      / 'PLANT         = ' , I_POITEM-PLANT,
      / 'MATERIAL GROUP = ' , I_POITEM-MAT_GRP,
      / 'QUANTITY      = ' , I_POITEM-QUANTITY LEFT-JUSTIFIED,
      / 'UNIT          = ' , I_POITEM-UNIT,
      / 'NET PRICE     = ' , I_POITEM-NET_PRICE LEFT-JUSTIFIED.
```

```
ULINE.
```

```
ENDLOOP.
```

Note: You can write any no fields from the Dictionary BAPIEKPO in the output, just Note the field and give that in the Write statement within LOOP...ENDLOOP

Output of the Report



Testing the Report:

Give transaction ME23 and give the Purchase order no, you can see the details of the report there.

